



WORKERPLUS S3

Heavy duty Safety boot

Upper	Pull-up Action Leather
Lining	Mesh
Midsole	Steel
Toecap	Steel
Safety standard	S3 / HRO, SRC
Size range	EU 36-47 / UK 3.5-12.0 US 4.0-13.0 / CM 23.5-31.0
Sample weight	0.720 kg
Norms	EN ISO 20345:2011 ASTM F2413:2018



091



Steel toecap

Robust metal support to protect the feet of the wearer against falling or rolling objects.



Breathable leather upper

Natural leather provides a high degree of wearer comfort combined with durability in versatile applications.



Steel midsole

Puncture resistant steel midsoles are made from stainless or coated steel and prevent sharp objects from penetrating the outsole.



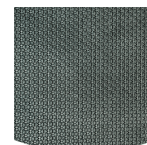
S3

S3 safety shoes are suitable for work in an environment with high humidity and presence of oil or hydrocarbons. These shoes also protect against perforation risk of the sole, and foot crushing.



SRC slip resistance

Slip resistant soles are one of the most important features of safety and occupational footwear. SRC slip resistant soles pass both SRA and SRB slip resistant tests, they are tested on both steel and ceramic surfaces.



Rubber outsole

Rubber outsoles provide versatile functions that make them suitable for many areas of application: excellent cut resistance, heat and cold resistance, high flexibility at cold temperatures, resistance against oil, fuel and many chemicals.

Industries:

Automotive, Chemical, Construction, Logistics, Mining, Oil & Gas, Industry

Environments:

Dry environment, Muddy environment, Uneven surfaces, Wet environment

Maintenance instructions:

To extend the life of your shoes, we recommend to clean them regularly and to protect them with adequate products. Do not dry your shoes on a radiator, nor nearby a heat source.

	Description	Measure unit	Result	EN ISO 20345
Upper	Pull-up Action Leather			
	Upper: permeability to water vapor	mg/cm ² /h	2.2	≥ 0.8
	Upper: water vapor coefficient	mg/cm ²	25.0	≥ 15
Lining	Mesh			
	Lining: permeability to water vapor	mg/cm ² /h	52.6	≥ 2
	Lining: water vapor coefficient	mg/cm ²	421.5	≥ 20
Toecap	Steel			
	Impact resistance toecap (clearance after impact 100J)	mm	NA	NA
	Compression resistance toecap (clearance after compression 10kN)	mm	NA	NA
	Impact resistance toecap (clearance after impact 200J)	mm	16.5	≥ 14
	Compression resistance toecap (clearance after compression 15kN)	mm	20.5	≥ 14

Sample size: 42

Our shoes are constantly evolving, the technical data above may change. All product names and brand Safety Jogger, are registered and may not be used or reproduced in any format, without written consent from us.