



Medium

FLOW S3 MID

FLAWS3MID

Sporty, mid-cut ESD safety shoe that is completely metal free

Upper	Synthetic Nubuck
Lining	3D-Mesh
Footbed	SJ foam footbed
Midsole	Anti-puncture Textile
Outsole	PU/PU
Toecap	Composite
Safety standard	S3 / ESD, SRC
Size range	EU 35-48 / UK 3.0-13.0 US 3.0-13.5 / CM 23.0-31.5
Sample weight	0.615 kg
Norms	EN ISO 20345:2011 ASTM F2413:2018

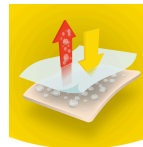


BLK



Composite toecap

Metal free and lightweight, no thermal or electrical conductivity



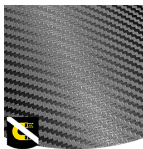
Airblaze technology

Moisture and temperature management system to provide optimum wearer comfort by keeping your feet dry and comfortable.



Puncture resistant lightweight

Metal free, super flexible and ultralight puncture resistant midsole. Covers 100% of the bottom area of the last, no thermal conductivity.



Metal free

Metal free safety shoes are in general lighter than regular safety shoes. They are also very beneficial for professionals who have to pass through metal detectors several times a day.



SRC slip resistance

Slip resistant soles are one of the most important features of safety and occupational footwear. SRC slip resistant soles pass both SRA and SRB slip resistant tests, they are tested on both steel and ceramic surfaces.



Electrostatic Discharge (ESD)

ESD provides the controlled discharge of electrostatic energy that can damage electronic components and avoids risks of ignition resulting from electrostatic charges. Volume resistance between 100 KiloOhm and 100 MegaOhm.

Industries:

Assembly, Automotive, Food & beverages, Industry, Logistics

Environments:

Dry environment

Maintenance instructions:

To extend the life of your shoes, we recommend to clean them regularly and to protect them with adequate products. Do not dry your shoes on a radiator, nor nearby a heat source.

	Description	Measure unit	Result	EN ISO 20345
Upper	Synthetic Nubuck			
	Upper: permeability to water vapor	mg/cm ² /h	2.2	≥ 0.8
	Upper: water vapor coefficient	mg/cm ²	28	≥ 15
Lining	3D-Mesh			
	Lining: permeability to water vapor	mg/cm ² /h	61	≥ 2
	Lining: water vapor coefficient	mg/cm ²	490	≥ 20
Footbed	SJ foam footbed			
	Footbed: abrasion resistance	cycles	400	≥ 400
Outsole	PU/PU			
	Outsole abrasion resistance (volume loss)	mm ³	84	≤ 150
	Outsole slip resistance SRA: heel	friction	0.36	≥ 0.28
	Outsole slip resistance SRA: flat	friction	0.37	≥ 0.32
	Outsole slip resistance SRB: heel	friction	0.14	≥ 0.13
	Outsole slip resistance SRB: flat	friction	0.19	≥ 0.18
	Antistatic value	MegaOhm	N/A	0.1 - 1000
	ESD value	MegaOhm	39	0.1 - 100
	Heel energy absorption	J	27	≥ 20
Toecap	Composite			
	Impact resistance toecap (clearance after impact 100J)	mm	N/A	NA
	Compression resistance toecap (clearance after compression 10kN)	mm	N/A	NA
	Impact resistance toecap (clearance after impact 200J)	mm	15.0	≥ 14
	Compression resistance toecap (clearance after compression 15kN)	mm	19.0	≥ 14

Sample size: 42

Our shoes are constantly evolving, the technical data above may change. All product names and brand Safety Jogger, are registered and may not be used or reproduced in any format, without written consent from us.