

Medium

JACKMAN S3

Comfortable chelsea boot

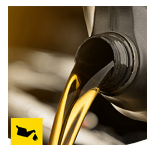
Upper	Pull-up Leather
Lining	Mesh
Footbed	SJ foam footbed
Midsole	Steel
Outsole	Rubber
Toecap	Steel
Safety standard	S3 / SRC
Size range	EU 36-48 / UK 3.5-13.0 US 4.0-13.5 / CM 23.5-31.5
Sample weight	0.704 kg
Norms	EN ISO 20345:2011 ASTM F2413:2018



DBN



BLK



Oil & fuel resistant

The outsole is resistant against oil and fuel.



Heel energy absorption

Heel energy absorption reduces the impact of jumps or running on the body of the wearer.



Removable insole

Renew your insole at a regular base or use your own orthopedic insoles for a higher comfort.



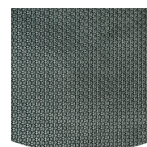
Breathable leather upper

Natural leather provides a high degree of wearer comfort combined with durability in versatile applications.



S3

S3 safety shoes are suitable for work in an environment with high humidity and presence of oil or hydrocarbons. These shoes also protect against perforation risk of the sole, and foot crushing.



Rubber outsole

Rubber outsoles provide versatile functions that make them suitable for many areas of application: excellent cut resistance, heat and cold resistance, high flexibility at cold temperatures, resistance against oil, fuel and many chemicals.

Industries:

Chemical, Construction, Industry, Logistics, Oil & Gas

Environments:

Dry environment, Extreme slippery surfaces, Uneven surfaces, Wet environment

Maintenance instructions:

To extend the life of your shoes, we recommend to clean them regularly and to protect them with adequate products. Do not dry your shoes on a radiator, nor nearby a heat source.

	Description	Measure unit	Result	EN ISO 20345
Upper	Pull-up Leather			
	Upper: permeability to water vapor	mg/cm²/h	9.1	≥ 0.8
	Upper: water vapor coefficient	mg/cm²	74.0	≥ 15
Lining	Mesh			
	Lining: permeability to water vapor	mg/cm²/h	63.7	≥ 2
	Lining: water vapor coefficient	mg/cm²	510	≥ 20
Footbed	SJ foam footbed			
	Footbed: abrasion resistance	cycles	25600/12800	≥ 400
Outsole	Rubber			
	Outsole abrasion resistance (volume loss)	mm³	88	≤ 150
	Outsole slip resistance SRA: heel	friction	0.37	≥ 0.28
	Outsole slip resistance SRA: flat	friction	0.50	≥ 0.32
	Outsole slip resistance SRB: heel	friction	0.24	≥ 0.13
	Outsole slip resistance SRB: flat	friction	0.49	≥ 0.18
	Antistatic value	MegaOhm	368	0.1 - 1000
	ESD value	MegaOhm	NA	0.1 - 100
Toecap	Steel			
	Impact resistance toecap (clearance after impact 100J)	mm	NA	NA
	Compression resistance toecap (clearance after compression 10kN)	mm	NA	NA
	Impact resistance toecap (clearance after impact 200J)	mm	NA	≥ 14
	Compression resistance toecap (clearance after compression 15kN)	mm	NA	≥ 14

Sample size: 42

Our shoes are constantly evolving, the technical data above may change. All product names and brand Safety Jogger, are registered and may not be used or reproduced in any format, without written consent from us.



Solutions for every workplace

INDUSTRIAL PROFESSIONAL TACTICAL TIGER GRIP

ENGINEERED
IN EUROPE

www.safetyjogger.com